



Customer: Elevated Hemp Solutions, LLC
Customer Sample ID: 1 Blue Raspberry Gummy (Blue)
Laboratory Number: 20H0014-01
Servings per Container: 3.6291



Cannabinoid Profile

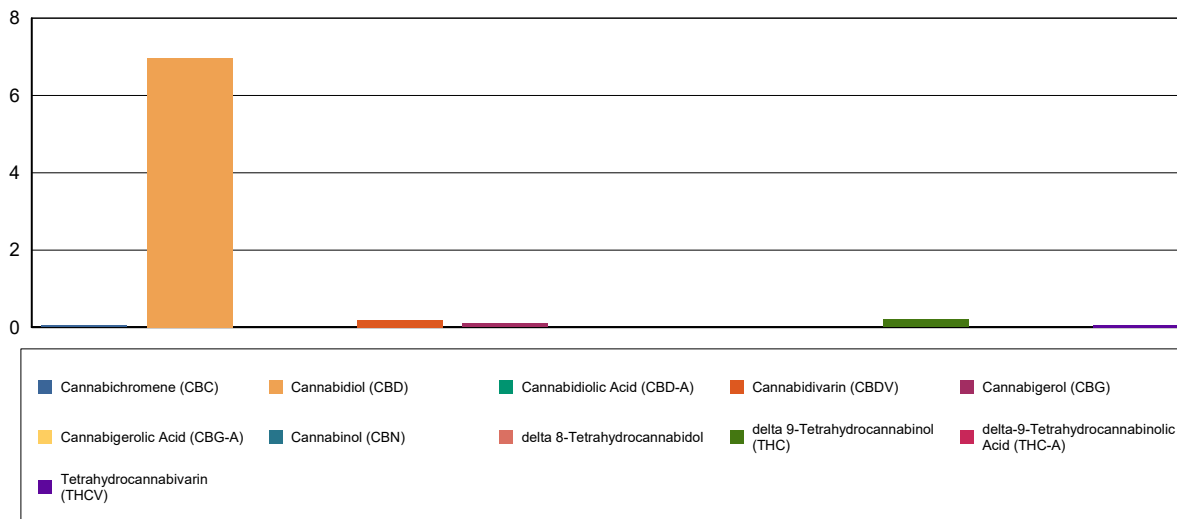
Extraction Technician: DF
Analytical Chemist: CB

Extraction Date(s)	Analysis Date(s)
8/3/2020	8/3/2020

Cannabinoids (HPLC)		Results		
	LOD (mg/g)	%	mg/g	mg/gummy
Cannabidiol (CBD)		0.70	6.96	25.3
delta 9-Tetrahydrocannabinol (THC)		0.02	0.211	0.764
Cannabidiol (CBD)		0.70	6.96	25.3
Tetrahydrocannabivarin (THCV)		0.006	0.063	0.227
Cannabigerol (CBG)		0.01	0.096	0.349
Cannabidiolic Acid (CBD-A)	<0.003			
Cannabigerolic Acid (CBG-A)	<0.003			
Cannabivarin (CBV)		0.01	0.096	0.349
Cannabidiol (CBD)		0.70	6.96	25.3
Tetrahydrocannabivarin (THCV)		0.006	0.063	0.227
Cannabinol (CBN)	<0.003			
delta 9-Tetrahydrocannabinol (THC)		0.02	0.211	0.764
delta 8-Tetrahydrocannabinol	<0.003			
Cannabichromene (CBC)		0.005	0.054	0.197
delta-9-Tetrahydrocannabinolic Acid (THC-A)	<0.003			
Cannabinoids Total		%	mg/g	
Max Active THC		0.02	0.21	
Max Active CBD		0.70	6.96	
T.Active Cannabinoids		0.73	7.32	
Total Cannabinoids		0.76	7.57	

Following USDA guidelines on uncertainty, Altitude Consulting's uncertainty are calculated for CBDa and CBD at +/- 4%.
 The uncertainty for THCa and THC are +/- 5%. This implies the range for a 10% value of CBD to be 9.6-10.4%. The
 uncertainty range for a 0.30% value of THC would be 0.28-0.32%.

Cannabinoid (mg/g)



Reporting Limits will vary based on sample extraction weight used for the analysis.

Altitude Consulting, LLC utilizes NIST traceable Reference Standards and Certified Reference Material to calibrate analytical instruments along with proven analytical methods.
 The methods are applied in the most ethical manner following good laboratory practice guidelines. The results of this report are based solely on the sample submitted and cannot be reproduced.



Customer: Elevated Hemp Solutions, LLC
Customer Sample ID: 2 Fruit Punch Gummy (Red)
Laboratory Number: 20H0014-02
Servings per Container: 3.7488



Cannabinoid Profile

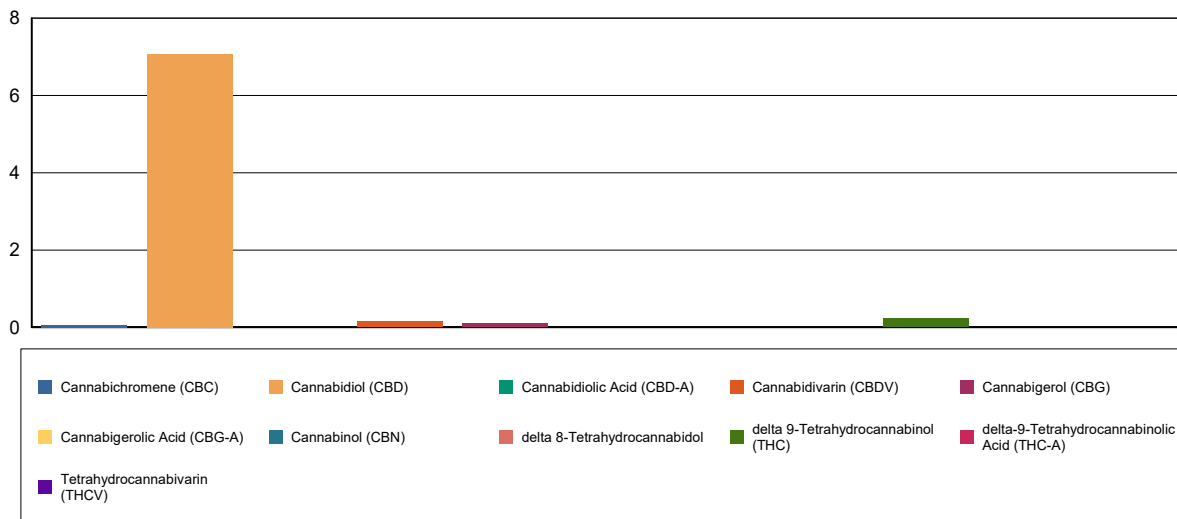
Extraction Technician: DF
Analytical Chemist: CB

Extraction Date(s)	Analysis Date(s)
8/3/2020	8/3/2020

Cannabinoids (HPLC)		Results		
	LOD (mg/g)	%	mg/g	mg/gummy
Cannabidiarin (CBDV)		0.02	0.157	0.587
Cannabidiolic Acid (CBD-A)	<0.004			
Cannabigerolic Acid (CBG-A)	<0.004			
Cannabigerol (CBG)		0.01	0.100	0.375
Cannabidiol (CBD)		0.71	7.07	26.5
Tetrahydrocannabivarin (THCV)	<0.004			
Cannabinol (CBN)	<0.004			
delta 9-Tetrahydrocannabinol (THC)		0.02	0.238	0.894
delta 8-Tetrahydrocannabidol	<0.004			
Cannabichromene (CBC)		0.006	0.061	0.230
delta-9-Tetrahydrocannabinolic Acid (THC-A)	<0.004			
Cannabinoids Total		%	mg/g	
Max Active THC		0.02	0.24	
Max Active CBD		0.71	7.07	
T.Active Cannabinoids		0.75	7.47	
Total Cannabinoids		0.76	7.63	

Following USDA guidelines on uncertainty, Altitude Consulting's uncertainty are calculated for CBDa and CBD at +/- 4%.
 The uncertainty for THCa and THC are +/- 5%. This implies the range for a 10% value of CBD to be 9.6-10.4%. The
 uncertainty range for a 0.30% value of THC would be 0.28-0.32%.

Cannabinoid (mg/g)



Reporting Limits will vary based on sample extraction weight used for the analysis.

Altitude Consulting, LLC utilizes NIST traceable Reference Standards and Certified Reference Material to calibrate analytical instruments along with proven analytical methods.
 The methods are applied in the most ethical manner following good laboratory practice guidelines. The results of this report are based solely on the sample submitted and cannot be reproduced.



Customer: Elevated Hemp Solutions, LLC
Customer Sample ID: 3 Orange Gummy (Orange)
Laboratory Number: 20H0014-03
Servings per Container: 3.6795



Cannabinoid Profile

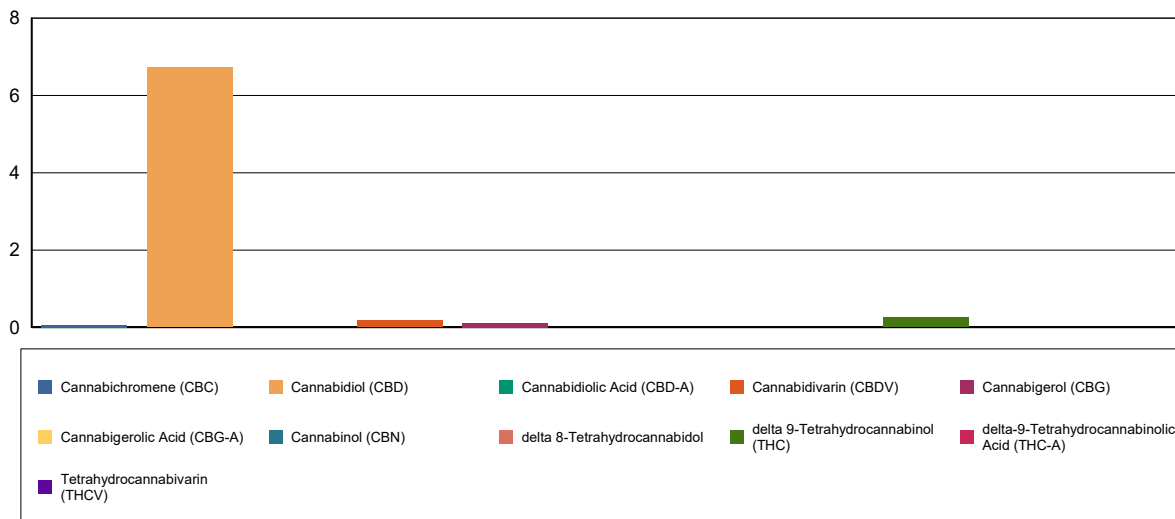
Extraction Technician: DF
Analytical Chemist: CB

Extraction Date(s)	Analysis Date(s)
8/3/2020	8/3/2020

Cannabinoids (HPLC)		Results		
	LOD (mg/g)	%	mg/g	mg/gummy
Cannabidiarin (CBDV)		0.02	0.169	0.623
Cannabidiolic Acid (CBD-A)	<0.003			
Cannabigerolic Acid (CBG-A)	<0.003			
Cannabigerol (CBG)		0.01	0.110	0.405
Cannabidiol (CBD)		0.67	6.72	24.7
Tetrahydrocannabivarin (THCV)	<0.003			
Cannabinol (CBN)	<0.003			
delta 9-Tetrahydrocannabinol (THC)		0.03	0.252	0.926
delta 8-Tetrahydrocannabidol	<0.003			
Cannabichromene (CBC)		0.006	0.064	0.236
delta-9-Tetrahydrocannabinolic Acid (THC-A)	<0.003			
Cannabinoids Total		%	mg/g	
Max Active THC		0.03	0.25	
Max Active CBD		0.67	6.72	
T.Active Cannabinoids		0.72	7.15	
Total Cannabinoids		0.73	7.32	

Following USDA guidelines on uncertainty, Altitude Consulting's uncertainty are calculated for CBDa and CBD at +/- 4%.
 The uncertainty for THCa and THC are +/- 5%. This implies the range for a 10% value of CBD to be 9.6-10.4%. The
 uncertainty range for a 0.30% value of THC would be 0.28-0.32%.

Cannabinoid (mg/g)



Reporting Limits will vary based on sample extraction weight used for the analysis.

Altitude Consulting, LLC utilizes NIST traceable Reference Standards and Certified Reference Material to calibrate analytical instruments along with proven analytical methods.
 The methods are applied in the most ethical manner following good laboratory practice guidelines. The results of this report are based solely on the sample submitted and cannot be reproduced.



Customer: Elevated Hemp Solutions, LLC
 Customer Sample ID: 4 Pineapple Gummy (Yellow)
 Laboratory Number: 20H0014-04
 Servings per Container: 3.4767



Cannabinoid Profile

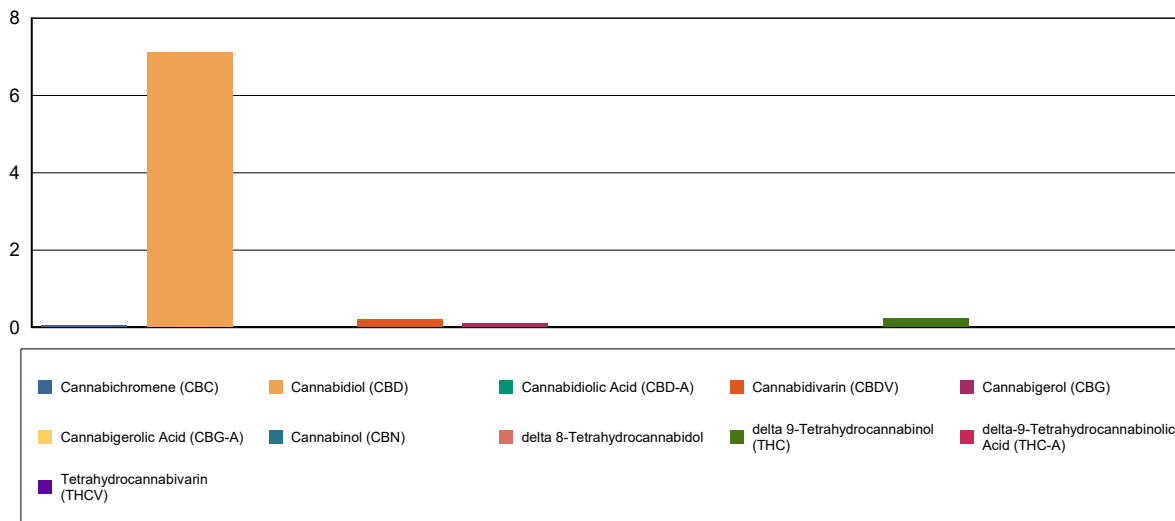
Extraction Technician: DF
 Analytical Chemist: CB

Extraction Date(s)	Analysis Date(s)
8/3/2020	8/3/2020

Cannabinoids (HPLC)		Results		
	LOD (mg/g)	%	mg/g	mg/gummy
Cannabidivarin (CBDV)		0.02	0.213	0.740
Cannabidiolic Acid (CBD-A)	<0.003			
Cannabigerolic Acid (CBG-A)	<0.003			
Cannabigerol (CBG)		0.009	0.092	0.320
Cannabidiol (CBD)		0.71	7.11	24.7
Tetrahydrocannabivarin (THCV)	<0.003			
Cannabinol (CBN)	<0.003			
delta 9-Tetrahydrocannabinol (THC)		0.02	0.216	0.750
delta 8-Tetrahydrocannabidol	<0.003			
Cannabichromene (CBC)		0.006	0.055	0.193
delta-9-Tetrahydrocannabinolic Acid (THC-A)	<0.003			
Cannabinoids Total		%	mg/g	
Max Active THC		0.02	0.22	
Max Active CBD		0.71	7.11	
T.Active Cannabinoids		0.75	7.47	
Total Cannabinoids		0.77	7.68	

Following USDA guidelines on uncertainty, Altitude Consulting's uncertainty are calculated for CBDa and CBD at +/- 4%. The uncertainty for THCa and THC are +/- 5%. This implies the range for a 10% value of CBD to be 9.6-10.4%. The uncertainty range for a 0.30% value of THC would be 0.28-0.32%.

Cannabinoid (mg/g)



Reporting Limits will vary based on sample extraction weight used for the analysis.

Altitude Consulting, LLC utilizes NIST traceable Reference Standards and Certified Reference Material to calibrate analytical instruments along with proven analytical methods. The methods are applied in the most ethical manner following good laboratory practice guidelines. The results of this report are based solely on the sample submitted and cannot be reproduced.



Customer: Elevated Hemp Solutions, LLC
Customer Sample ID: 5 Watermelon Gummy (Pink)
Laboratory Number: 20H0014-05
Servings per Container: 3.5866



Cannabinoid Profile

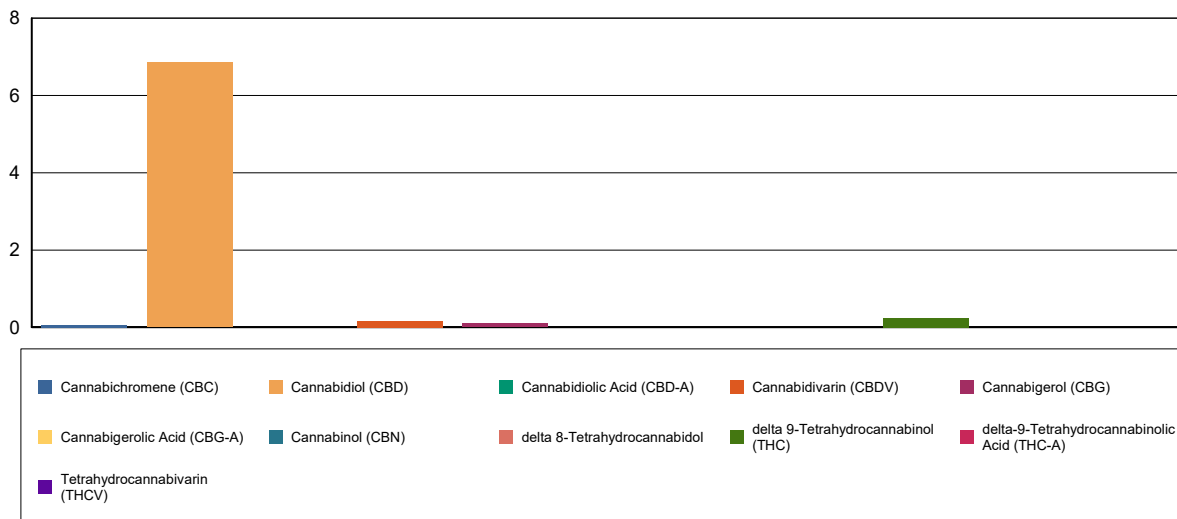
Extraction Technician: DF
Analytical Chemist: CB

Extraction Date(s)	Analysis Date(s)
8/3/2020	8/3/2020

Cannabinoids (HPLC)		Results		
	LOD (mg/g)	%	mg/g	mg/gummy
Cannabidiol (CBD)		0.68	6.85	24.6
Cannabidiol (CBD)		0.68	6.85	24.6
Tetrahydrocannabivarin (THCV)	<0.003			
Cannabigerol (CBG)		0.01	0.104	0.373
Cannabidiol (CBD)		0.68	6.85	24.6
Tetrahydrocannabivarin (THCV)	<0.003			
Cannabiol (CBN)	<0.003			
delta 9-Tetrahydrocannabinol (THC)		0.02	0.241	0.866
delta 8-Tetrahydrocannabinol	<0.003			
Cannabichromene (CBC)		0.006	0.061	0.218
delta-9-Tetrahydrocannabinolic Acid (THC-A)	<0.003			
Cannabinoids Total		%	mg/g	
Max Active THC		0.02	0.24	
Max Active CBD		0.69	6.85	
T.Active Cannabinoids		0.73	7.25	
Total Cannabinoids		0.74	7.41	

Following USDA guidelines on uncertainty, Altitude Consulting's uncertainty are calculated for CBDa and CBD at +/- 4%.
 The uncertainty for THCa and THC are +/- 5%. This implies the range for a 10% value of CBD to be 9.6-10.4%. The uncertainty range for a 0.30% value of THC would be 0.28-0.32%.

Cannabinoid (mg/g)



Reporting Limits will vary based on sample extraction weight used for the analysis.

Altitude Consulting, LLC utilizes NIST traceable Reference Standards and Certified Reference Material to calibrate analytical instruments along with proven analytical methods. The methods are applied in the most ethical manner following good laboratory practice guidelines. The results of this report are based solely on the sample submitted and cannot be reproduced.