



Customer: Elevated Hemp Solutions, LLC  
 Customer Sample ID: 2000mg Cream - E6P  
 Laboratory Number: 20F0139-02



## Cannabinoid Profile

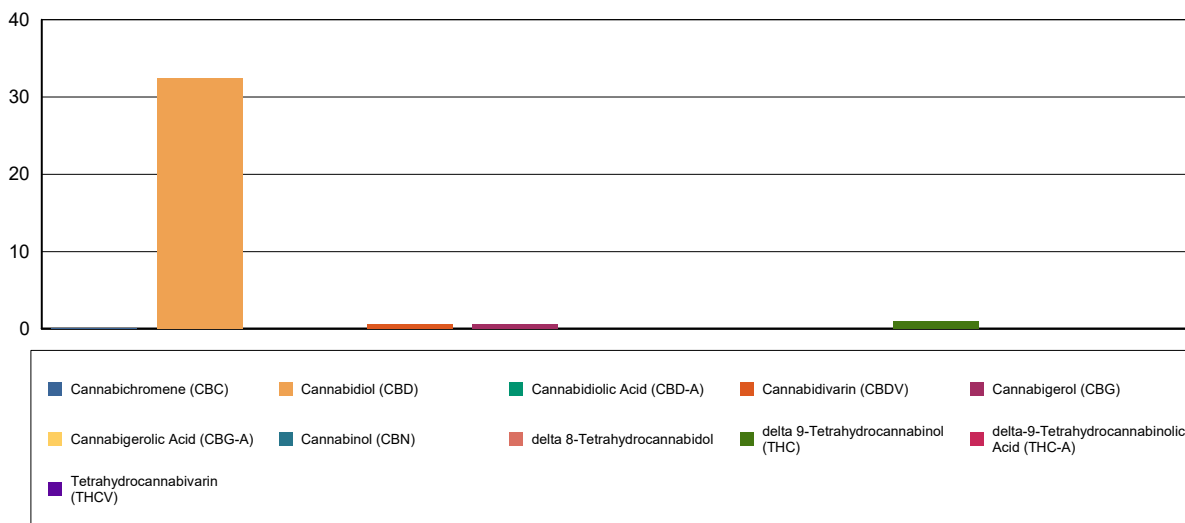
Extraction Technician: DF  
 Analytical Chemist: CB

Extraction Date(s)	Analysis Date(s)
6/15/2020	6/15/2020

Cannabinoids (HPLC)		Results	
	LOD (mg/g)	%	mg/g
Cannabidivarin (CBDV)		0.06	0.572
Cannabidiolic Acid (CBD-A)	<0.050		
Cannabigerolic Acid (CBG-A)	<0.050		
Cannabigerol (CBG)		0.06	0.589
Cannabidiol (CBD)		3.24	32.4
Tetrahydrocannabivarin (THCV)	<0.050		
Cannabinol (CBN)	<0.050		
delta 9-Tetrahydrocannabinol (THC)		0.10	1.04
delta 8-Tetrahydrocannabinol	<0.050		
Cannabichromene (CBC)		0.007	0.073
delta-9-Tetrahydrocannabinolic Acid (THC-A)	<0.050		
Cannabinoids Total		%	mg/g
Max Active THC		0.10	1.04
Max Active CBD		3.24	32.40
T.Active Cannabinoids		3.41	34.10
Total Cannabinoids		3.46	34.60

Following USDA guidelines on uncertainty, Altitude Consulting's uncertainty are calculated for CBDa and CBD at +/- 4%. The uncertainty for THCa and THC are +/- 5%. This implies the range for a 10% value of CBD to be 9.6-10.4%. The uncertainty range for a 0.30% value of THC would be 0.28-0.32%.

### Cannabinoid (mg/g)



Reporting Limits will vary based on sample extraction weight used for the analysis.

Altitude Consulting, LLC utilizes NIST traceable Reference Standards and Certified Reference Material to calibrate analytical instruments along with proven analytical methods. The methods are applied in the most ethical manner following good laboratory practice guidelines. The results of this report are based solely on the sample submitted and cannot be reproduced.